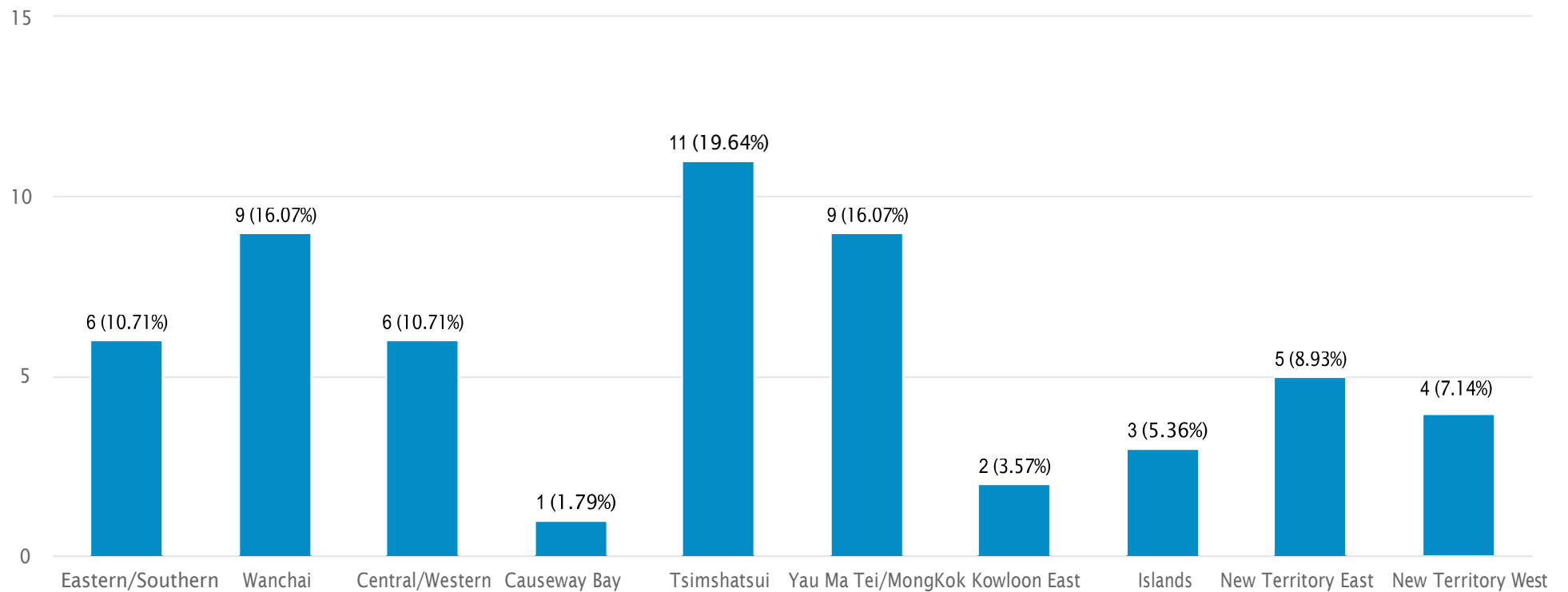


Survey on Lunar New Year Hotel Performance 2024

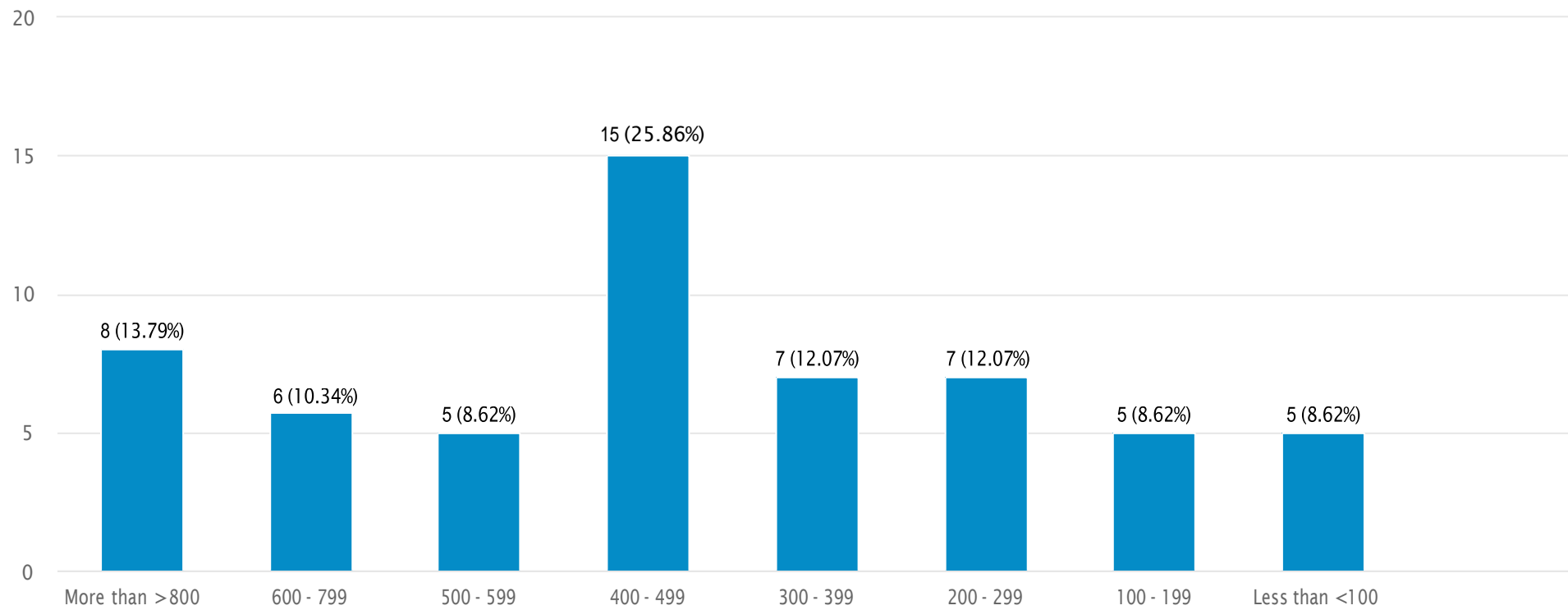
Hotel District 酒店區域

Number of responses: 56



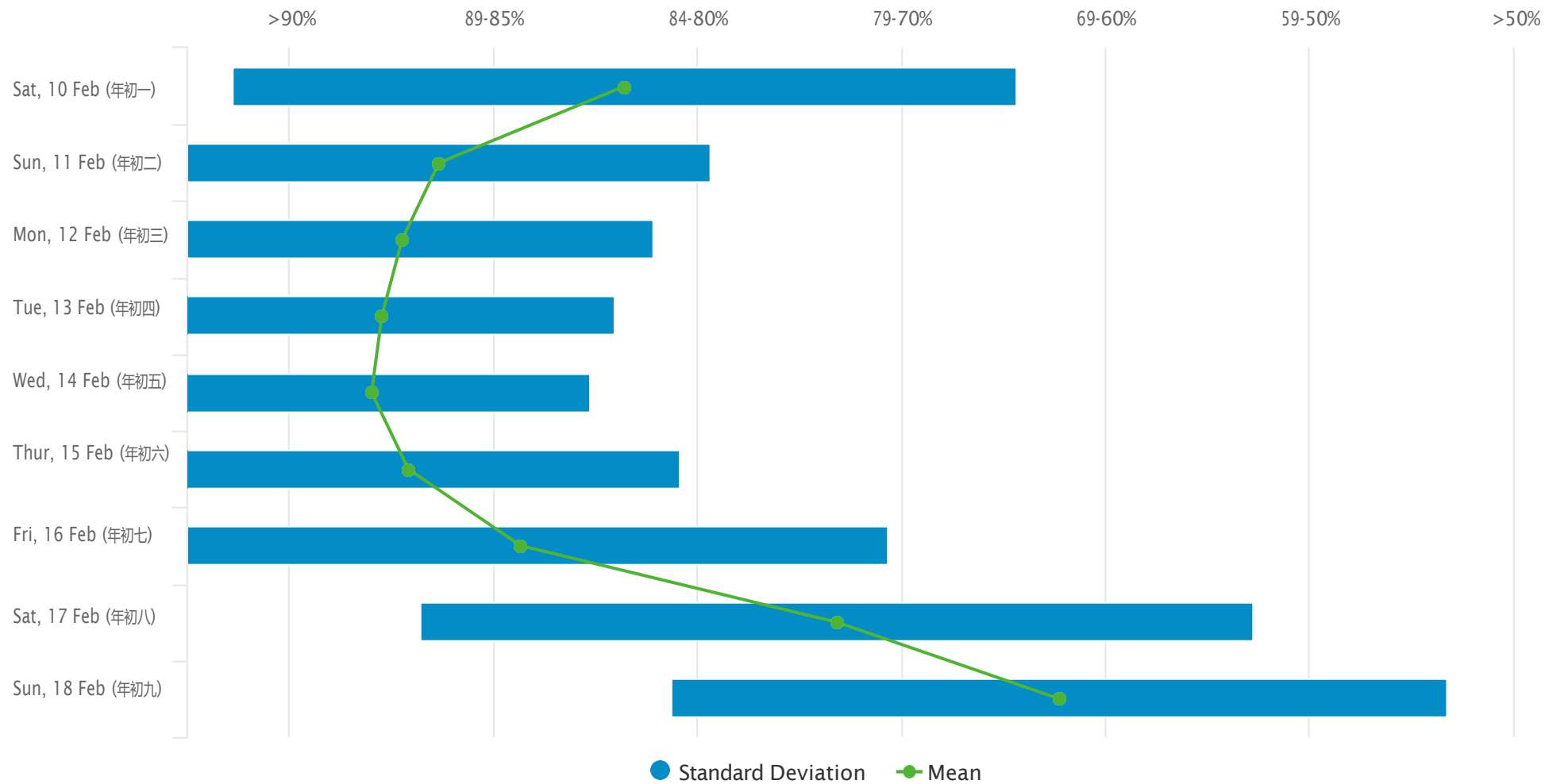
Size of Hotel 酒店的規模

Number of responses: 58



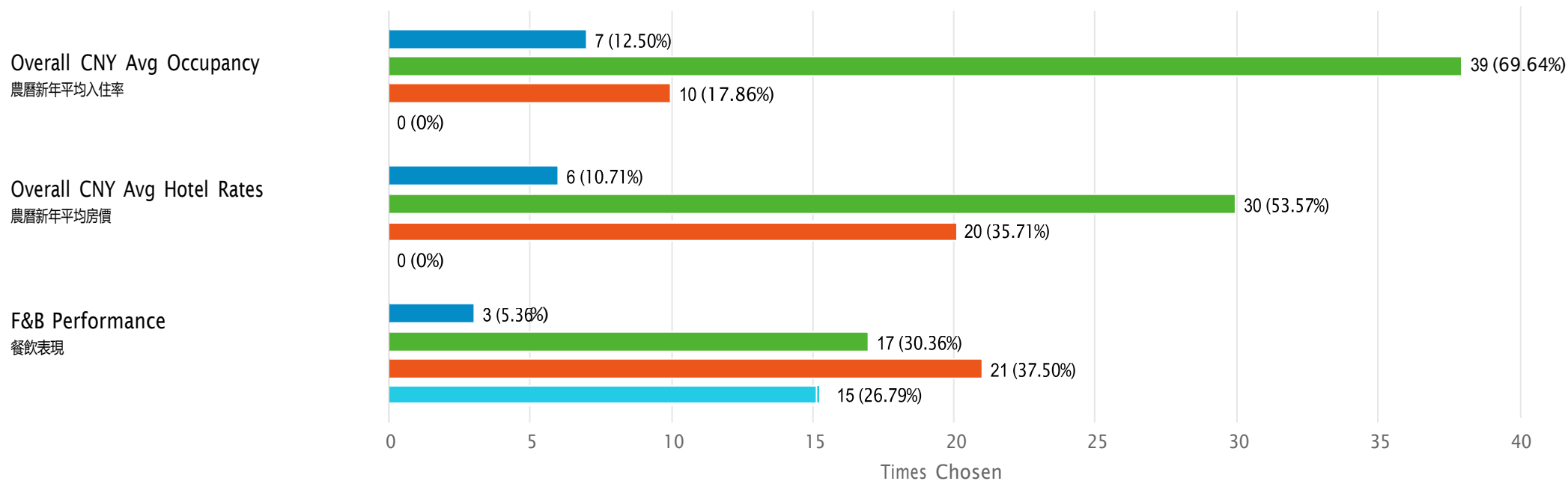
Lunar New Year Occupancy (10 - 18 February) 農曆新年入住率 (2月10至18日)

Number of responses: 56



Lunar New Year Performance (10 - 18 February) 農曆新年表現 (2月10日至18日)

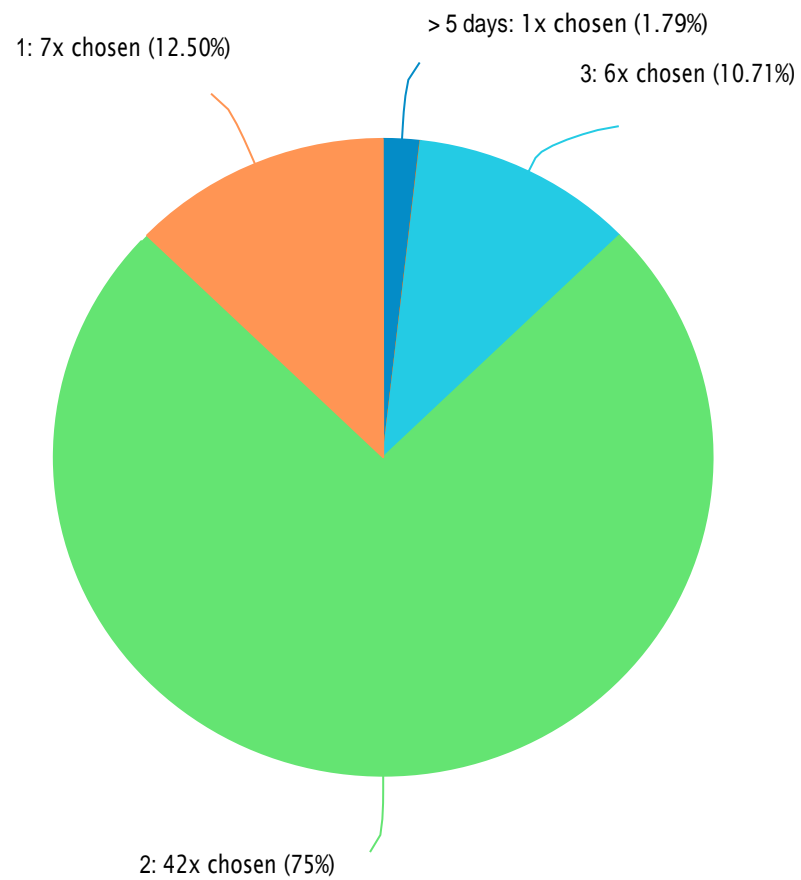
Number of responses: 56



● Better than Expectation 比預期好 ● Meeting Expectation 達預期目標 ● Worse than Expectation 比預期差 ● Not applicable 不適用

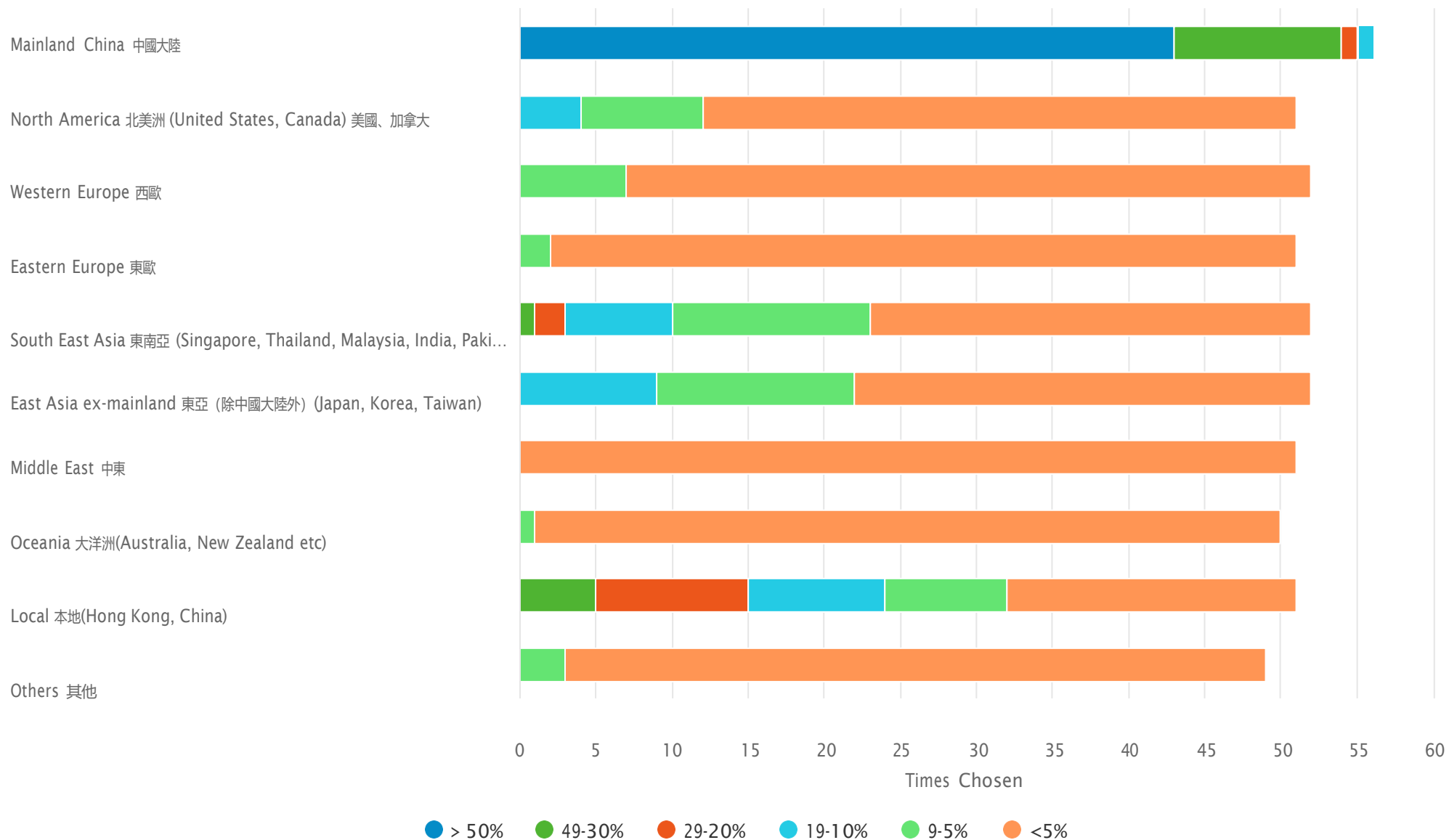
Average night(s) per stay by Hotel Guests 客人住宿的平均晚數

Number of responses: 56



Hotel guests' countries and cities of origin 客人的來源國家及地區

Number of responses: 56



How effective is the government's effort in promoting tourist visiting Hong Kong this Lunar New Year

政府在促進農曆新年旅客訪港的成效如何

Number of responses: 56

